

JVC

SCHEMATIC DIAGRAMS

COLOR TELEVISION

BASIC CHASSIS

CH

AV-29W33 /T AV-29W33B /T

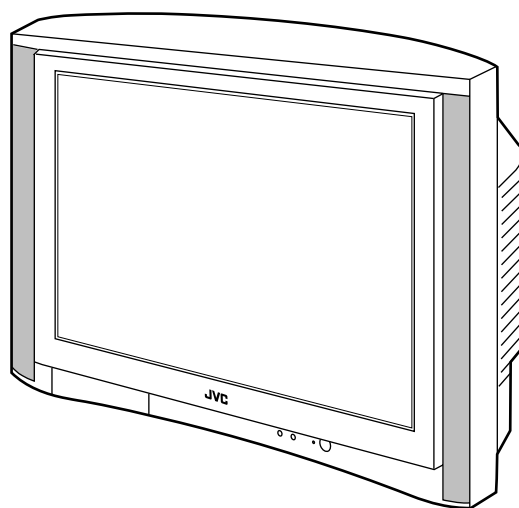
www.mirmasterov.com



RM-C1019-1H
[AV-29W33 /T]



RM-C1018-1H
[AV-29W33B /T]



AV-29W33 π AV-29W33B π STANDARD CIRCUIT DIAGRAM

■ NOTE ON USING CIRCUIT DIAGRAMS

1. SAFETY

The components identified by the \triangle symbol and shading are critical for safety. For continued safety replace safety critical components only with manufactures recommended parts.

2. SPECIFIED VOLTAGE AND WAVEFORM VALUES

The voltage and waveform values have been measured under the following conditions.

- (1) Input signal : Color bar signal
- (2) Setting positions of each knob/button and variable resistor : Original setting position when shipped
- (3) Internal resistance of tester : DC 20k Ω /V
- (4) Oscilloscope sweeping time : H \Rightarrow 20 μ S/div
: V \Rightarrow 5mS/div
: Others \Rightarrow Sweeping time is specified.
- (5) Voltage values : All DC voltage values

* Since the voltage values of signal circuit vary to some extent according to adjustments, use them as reference values.

3. INDICATION OF PARTS SYMBOL [EXAMPLE]

- In the PW board : R1209 \rightarrow R209

4. INDICATIONS ON THE CIRCUIT DIAGRAM

(1) Resistors

• Resistance value

- No unit : [Ω]
- k : [k Ω]
- M : [M Ω]

• Rated allowable power

- No indication : 1/16 [W]
- Others : As specified

• Type

- No indication : Carbon resistor
- OMR : Oxide metal film resistor
- MFR : Metal film resistor
- MPR : Metal plate resistor
- UNFR : Non-Flammable resistor
- FR : Fusible resistor

* Composition resistor 1/2 [W] is specified as 1/2S or Comp.

(2) Capacitors

• Capacitance value

- 1 or higher : [pF]
- less than 1 : [μ F]

• Withstand voltage

- No indication : DC50[V]
- AC indicated : AC withstand voltage [V]
- Others : DC withstand voltage [V]

* Electrolytic Capacitors

47/50[Example] : Capacitance value [μ F]/withstand voltage[V]

• Type

- No indication : Ceramic capacitor
- MY : Mylar capacitor
- MM : Metalized mylar capacitor
- PP : Polypropylene capacitor
- MPP : Metalized polypropylene capacitor
- MF : Metalized film capacitor
- TF : Thin film capacitor
- BP : Bipolar electrolytic capacitor
- TAN : Tantalum capacitor

(3) Coils



- No unit : [μ H]
- Others : As specified

(4) Power Supply



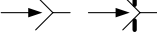
-  : B1
-  : B2(12V)
-  : 9V
-  : 5V

* Respective voltage values are indicated

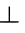



(5) Test point

-  : Test point
-  : Only test point display

(6) Connecting method

-  : Connector
-  : Wrapping or soldering
-  : Receptacle

(7) Ground symbol

-  : LIVE side ground
-  : ISOLATED(NEUTRAL) side ground
-  : EARTH ground
-  : DIGITAL ground

5. NOTE FOR REPAIRING SERVICE

This model's power circuit is partly different in the GND. The difference of the GND is shown by the LIVE : (\perp) side GND and the ISOLATED(NEUTRAL) : (\nmid) side GND. Therefore, care must be taken for the following points.

- (1) Do not touch the LIVE side GND or the LIVE side GND and the ISOLATED(NEUTRAL) side GND simultaneously. If the above caution is not respected, an electric shock may be caused. Therefore, make sure that the power cord is surely removed from the receptacle when, for example, the chassis is pulled out.
- (2) Do not short between the LIVE side GND and ISOLATED(NEUTRAL) side GND or never measure the LIVE side GND and ISOLATED(NEUTRAL) side GND at the same time with a measuring apparatus (oscilloscope, etc.). If the above precaution is not respected , a fuse or any parts will be broken.

• Since the circuit diagram is a standard one, the circuit and circuit constants may be subject to change for improvement without any notice.

CONTENTS

SEMICONDUCTOR SHAPES 2-2

BLOCK DIAGRAM 2-3

CIRCUIT DIAGRAMS

MAIN PWB CIRCUIT DIAGRAM (1/2) 2-5

MAIN PWB CIRCUIT DIAGRAM (2/2) 2-7

CRT SOCKET PWB CIRCUIT DIAGRAM 2-9

FRONT CONTROL PWB CIRCUIT DIAGRAM 2-11

PATTERN DIAGRAMS

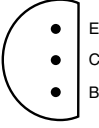

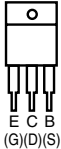


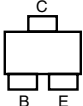
MAIN PWB PATTERN 2-13

CRT SOCKET PWB PATTERN 2-15

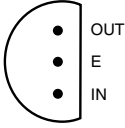
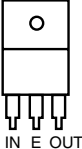
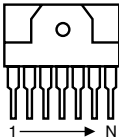
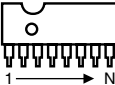
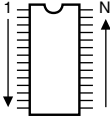
FRONT CONTROL PWB PATTERN 2-16

SEMICONDUCTOR SHAPES

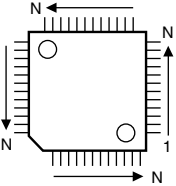
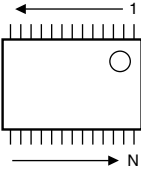
TRANSISTOR

BOTTOM VIEW	FRONT VIEW				TOP VIEW
					CHIP TR 

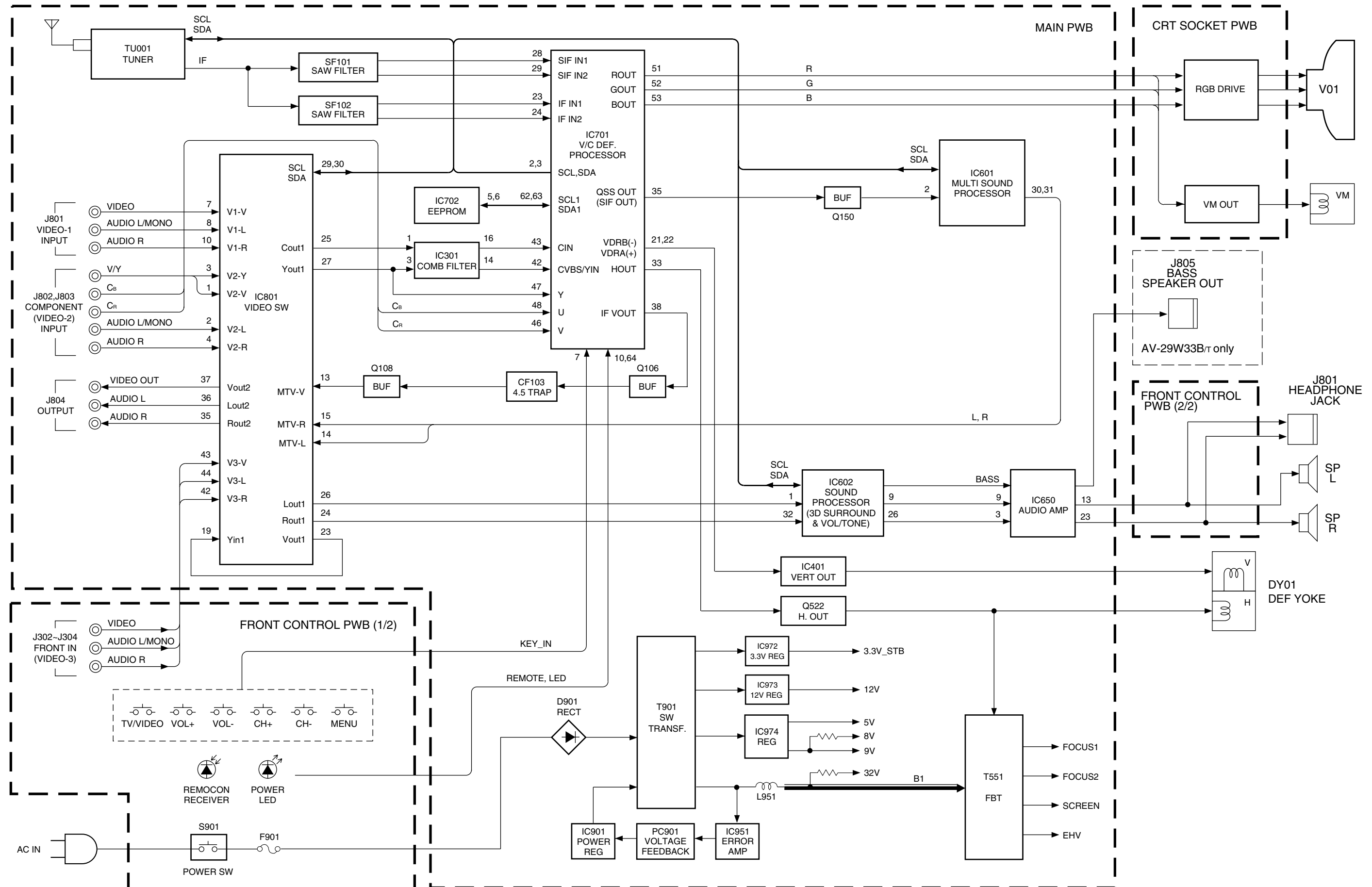
IC

BOTTOM VIEW	FRONT VIEW			TOP VIEW
				

CHIP IC

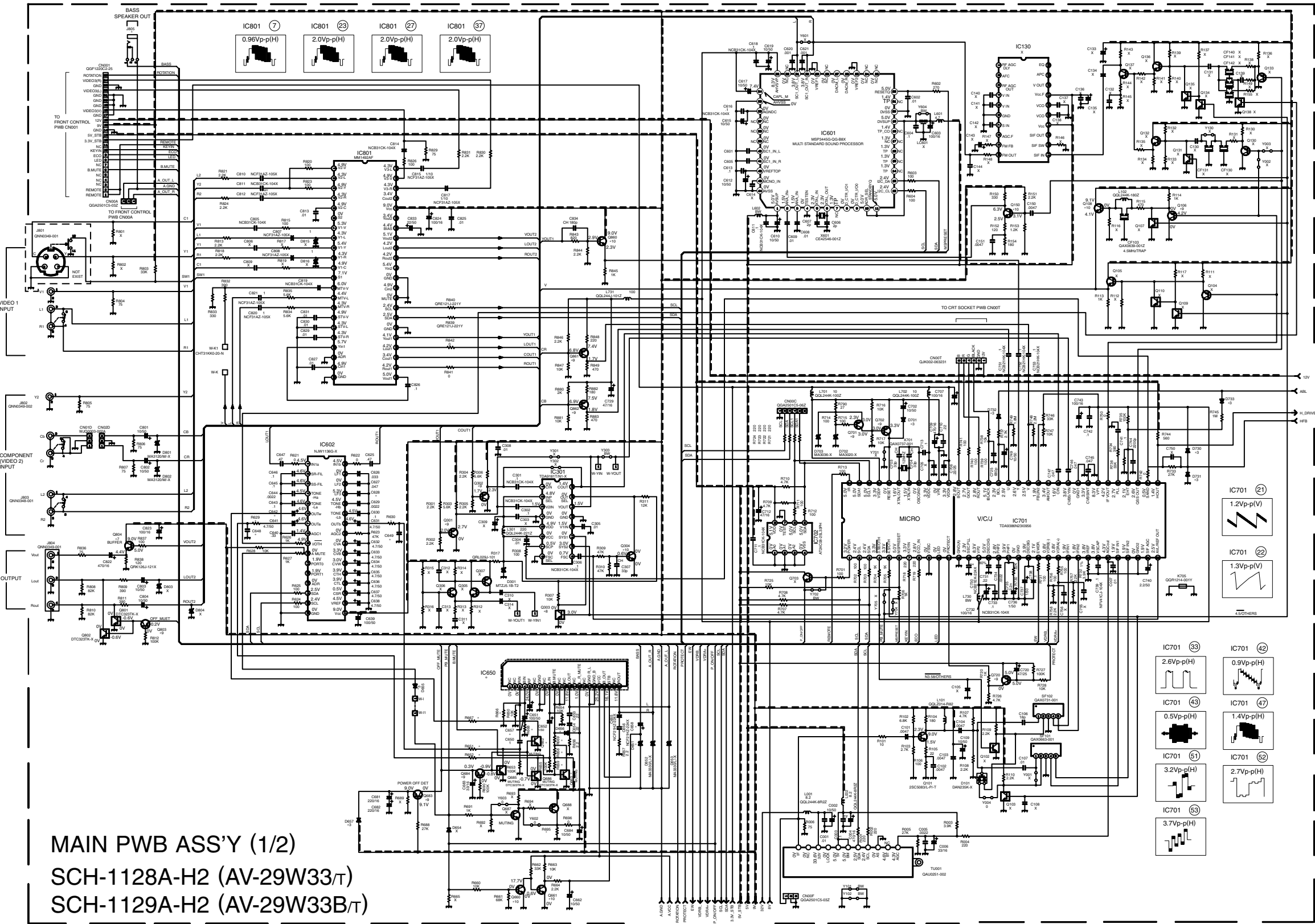
TOP VIEW		
		

BLOCK DIAGRAM



CIRCUIT DIAGRAMS
MAIN PWB CIRCUIT DIAGRAM (1/2)

AV-29W33
AV-29W33B
AV-29W33
AV-29W33B



MAIN PWB ASS'Y (1/2)
SCH-1128A-H2 (AV-29W33/T)
SCH-1129A-H2 (AV-29W33B/T)

* DIFFERENCE LIST (* PARTS)

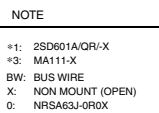
	R629	R630	R651	R652	R658	R659	R666	R667	R668	R669	R695	C628	C642
SCH-1128A-H2	1kΩ	1kΩ	10kΩ	10kΩ	NOT USED	NOT USED	NOT USED	NOT USED	NOT USED	NOT USED	15kΩ	0.022μF/50V	NOT USED
SCH-1129A-H2	0kΩ	0kΩ	8.2kΩ	8.2kΩ	8.2kΩ	8.2kΩ	10kΩ	3.9kΩ	100kΩ	8.2kΩ	10kΩ	0.082μF/50V	10μF/50V

	C648	C649	C657	C658	D651	D656	Q662	Q663	IC650	J805
SCH-1128A-H2	0.015μF/50V	0.015μF/50V	NOT USED	NOT USED	NOT USED	NOT USED	NOT USED	NOT USED	AN5277	NOT USED
SCH-1129A-H2	NOT USED	NOT USED	10μF/50V	2200μF/35V	MA3330/L-X	MA111-X	DTC323TK-X	UN2212-X	AN7585	QNS0100-001

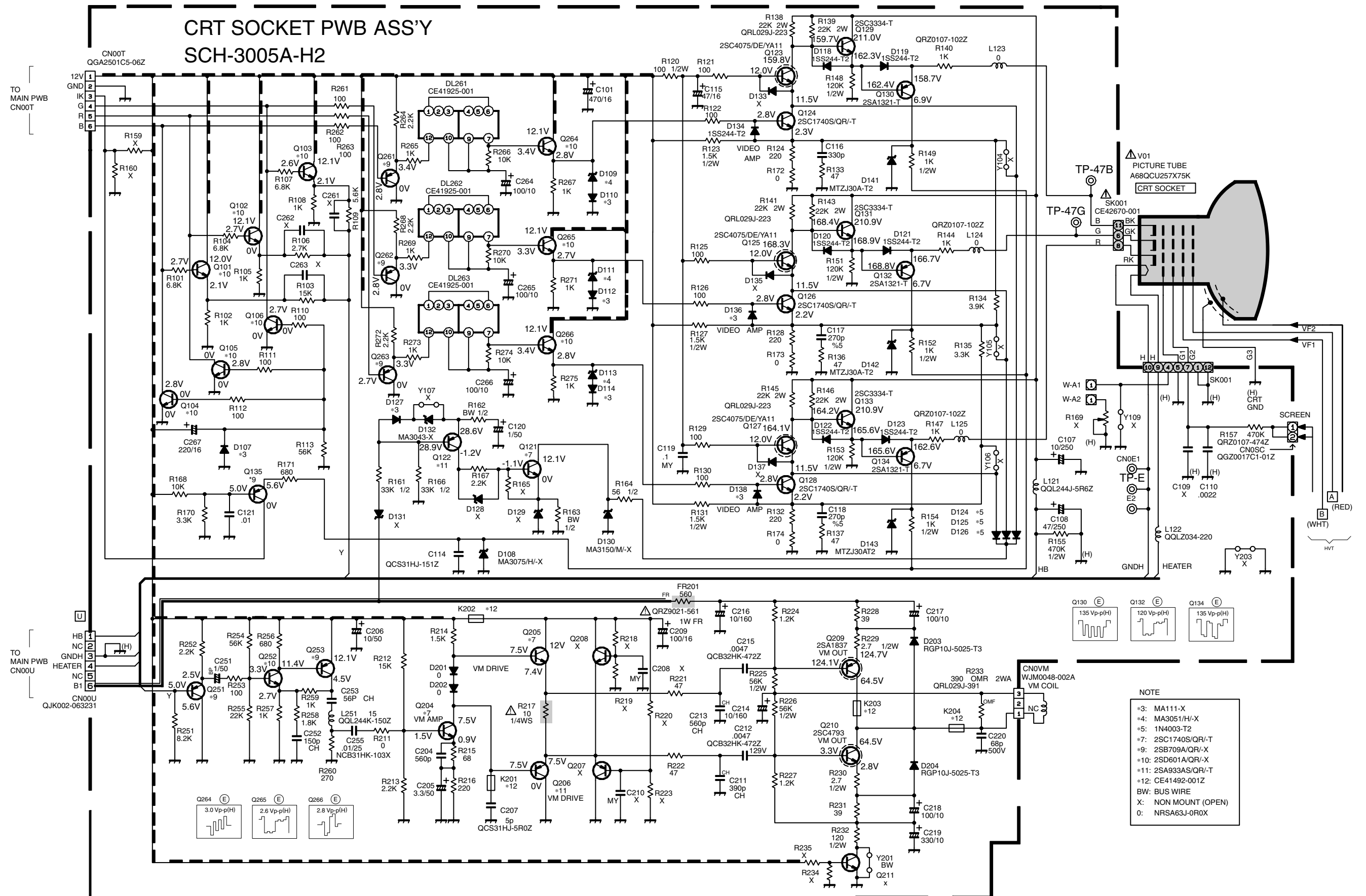
NOTE

*3: MA111-X
*7: 2SC1740S/QR-T
*8: UN2212-X
*9: 2SD709A/QR-X
*10: 2SD601A/QR-X
BW: BUS WIRE
X: NON MOUNT(OPEN)
0: NRS63J-0R0X

SCH-1128A-H2 (AV-29W33_T)
SCH-1129A-H2 (AV-29W33B_T)



CRT SOCKET PWB CIRCUIT DIAGRAM

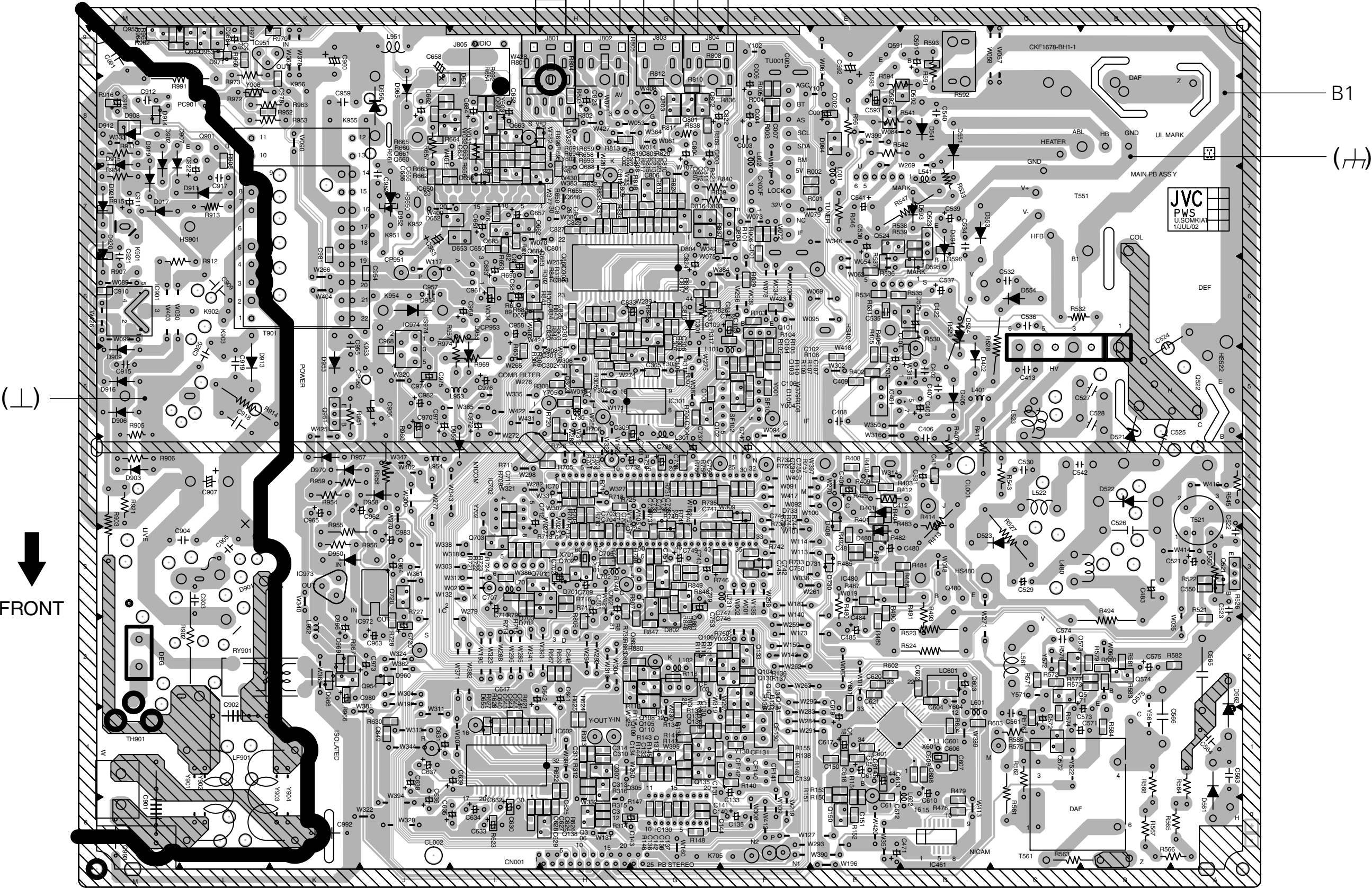


[illegible]

PATTERN DIAGRAMS
MAIN PWB PATTERN

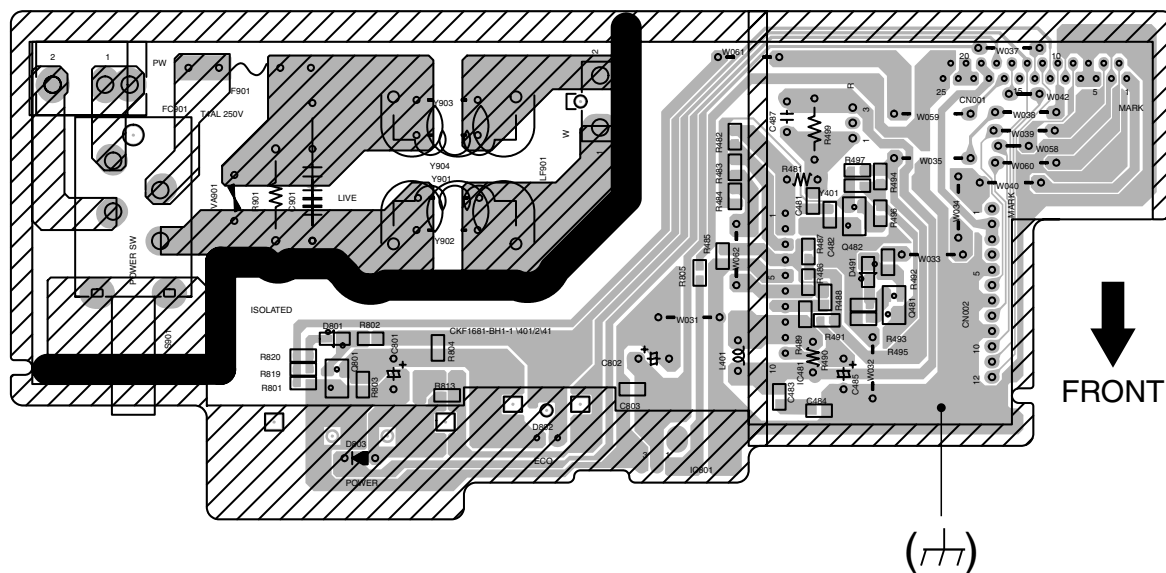
AV-29W33
AV-29W33B

AV-29W33
AV-29W33B

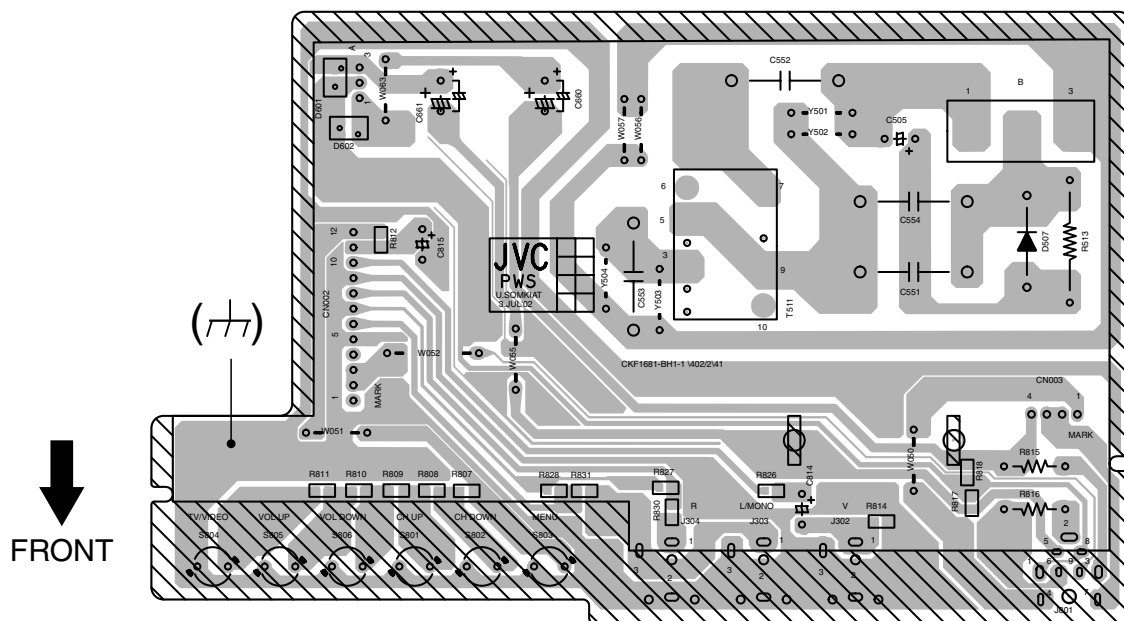


FRONT CONTROL PWB PATTERN

— FRONT CONTROL (1/2) —



— FRONT CONTROL (2/2) —





VICTOR COMPANY OF JAPAN, LIMITED

HOME AV NETWORK BUSINESS UNIT. 12,3-chome,Moriya-cho,Kanagawa-ku,Yokohama,Kanagawa-prefecture,221-8528,Japan

AV29W33T-H #4
AV29W33BT-H #4



Printed in Japan
0211 WPC